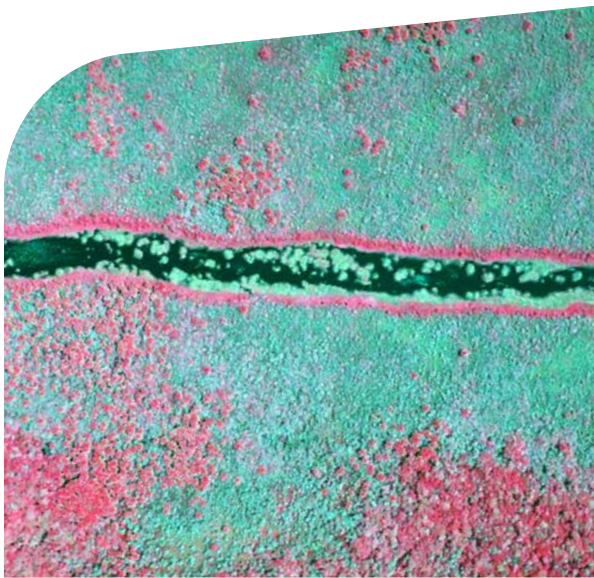


Portable Remote Sensing with ADAM

The Out-of-the-Box Solution for Worldwide Application



Mobile Remote Sensing for Rental Aircraft



The mobile and flexible remote sensing platform ADAM (Airborne Data Acquisition & Mapping) can be transported in two suitcases to any country in the world. It can be mounted by a single person in one hour on a rented aircraft. ADAM has been certified to be operated on Cessna 182, 182T, 182S and T182T.

What our Partners say

The image processing software calculates an extremely precise tree crown surface model. When used in combination with a relatively low number of terrestrial survey points it provides a low cost determination of forest biomass and carbon stock with high accuracy.

Dr. Michael Kleine, ANRICA Forestry Division



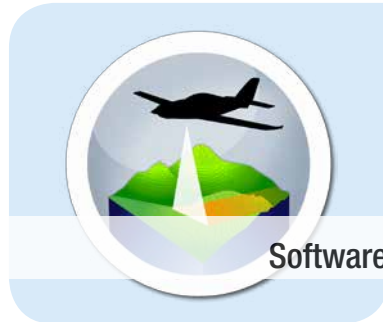
The mobile airborne data acquisition platform allowed us to significantly reduce the cost of a national forestry inventory program without compromising accuracy. It makes a big difference in emerging and developing countries whether such an inventory costs 10 or only 5 million euros.

DI Markus Sommerauer, CEO ANRICA

Our Expertise in Remote Sensing



- Mobile and flexible remote sensing platform ADAM
- Suitcase solution for world-wide use
- Certified and available for Cessna 182, 182T, 182S and T182T



- DSM/DTM and ortho-photo production with RSG-Photo
- Multi-sensor image stacks with RSG-Photo
- Forest and infrastructure monitoring with IMPACT-LIDAR



- Customized data processing solutions for value adding suppliers
 - ▶ Forest inventory
 - ▶ Precision farming
 - ▶ Urban mapping
 - ▶ Thermal mapping
 - ▶ and many others ...
- Consulting & research

System Components Overview

Standard configuration

- Phase One IXU-R 180 RGB
80MP / 10328 x 7760pix / 0.8fps / 50mm lens
- Prosilica GX6600 NIR
30MP / 6576 x 4348pix / 4fps / 35mm lens
- Riegl VQ580 laser scanner (optional)
50 – 380kHz / 60° FOV

Alternative configuration

- Infratec VarioCAM hr head 640S LWIR (7.5 – 15µm)
640 x 480pix extended by sweeping mirror to:
1800pix across track / 0.8fps / 50mm lens
- Prosilica GX6600 RGB
30MP / 6576 x 4348pix / 4fps / 35mm lens
- Prosilica GC2450 NIR
5MP / 2448 x 2050pix / 15fps / 8mm lens
- Riegl VQ580 laser scanner (optional)
50 – 380kHz / 60° FOV



Rainforest inventory in Suriname

JOANNEUM RESEARCH

is a professional innovation and technology provider with a long track record in cutting-edge research at an international level. The innovation company focuses on application oriented research and development projects to promote technology transfer to the economy.

DIGITAL

The Institute for Information and Communication Technologies is your trustworthy partner for applied high-tech solutions.

CONTACT

JOANNEUM RESEARCH

Forschungsgesellschaft mbH

DIGITAL

Institute for Information and Communication Technologies

Univ.-Prof. Dipl.-Forstw. Dr. Mathias Schardt

Steyrergasse 17

8010 Graz

Austria

Phone +43 316 876 1754

email: info@remotesensing.at

www.remotesensing.at